



FeDom (China) Limited

Please follow step by step to achieve Internet Setting:

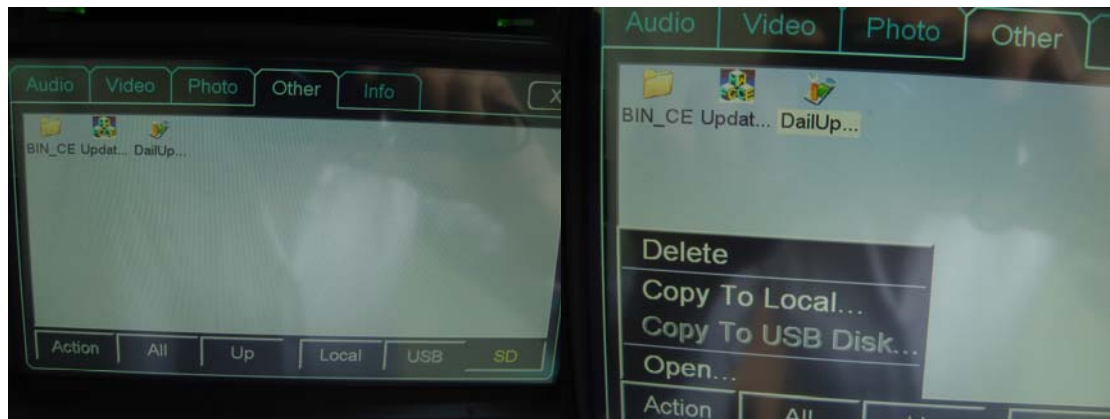
1, Copy the three files into a blank SD Card:

- "BIN_CE"
- "DailUpSetting"
- "Update"

2, Insert the SD Card into the device:

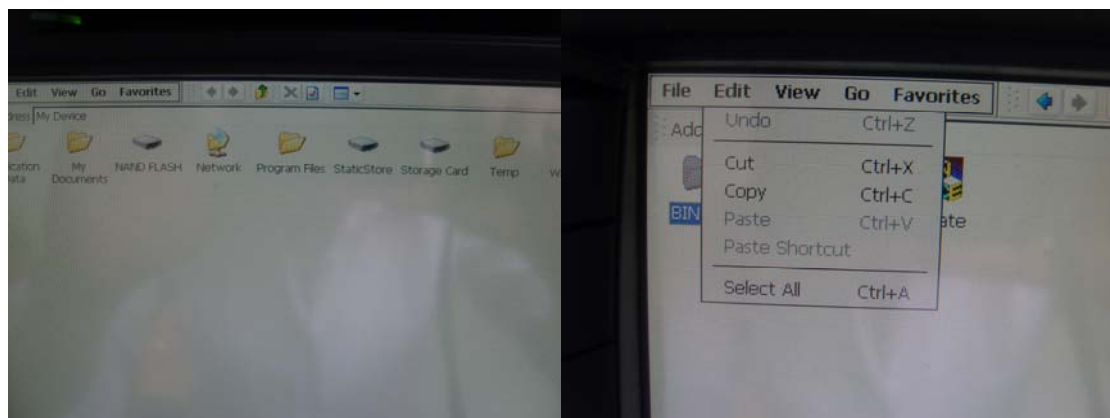
"MENU" – "FILES" – "SD" – "OTHER" – Click "DailUpSetting" – "ACTION" – "Copy to Local..."

Finishe.



3, Go back to "MENU" – "OPTIONS" – "SYSTEM" – "UPDATE" – "MY DEVICE" – "Storage Card" – Click "BIN_CE" – "Edit" – "Copy"

Finish.



4, Go back to "StaticStore" – "Edit" – "Paste"

Finish.

Add: 21F, Building 3, Jilian Mansion, North Lianhua Village, FuTian District, Shenzhen, 518035

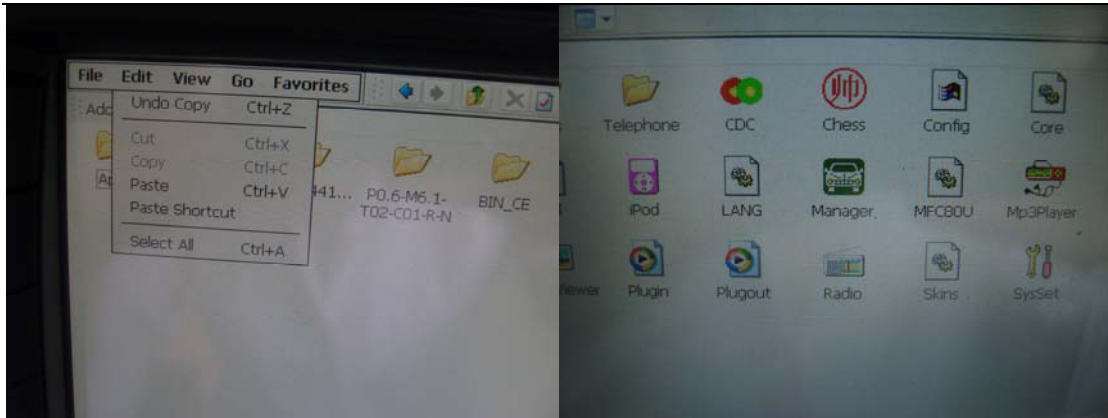
Tel: 86-755-83166456 Fax: 86-755-83926456

Website: www.fedomcn.com

E-mail: support@fedomcn.com



FeDom (China) Limited



5, Go back to “StaticStore” – “D2280” – “Manager” – back to the main MENU.

Achieved!!